

02 TRANSFORMING HEIs IN THE GCR

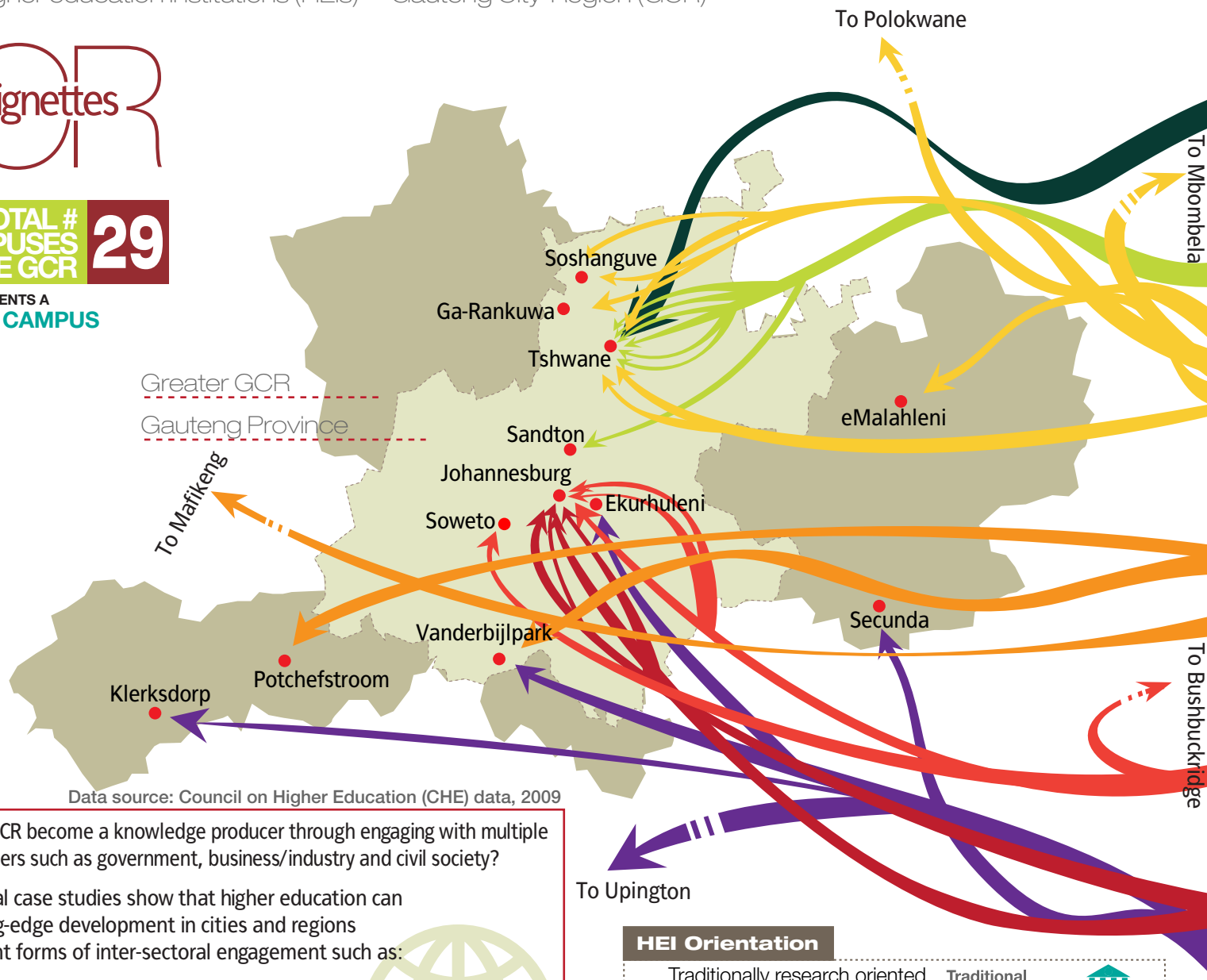
Is university-based regional development possible?

Higher education institutions (HEIs) Gauteng City-Region (GCR)



THE TOTAL # OF CAMPUSES IN THE GCR 29

EACH → REPRESENTS A UNIVERSITY CAMPUS



Data source: Council on Higher Education (CHE) data, 2009

? Can the GCR become a knowledge producer through engaging with multiple stakeholders such as government, business/industry and civil society?

Numerous global case studies show that higher education can stimulate cutting-edge development in cities and regions through different forms of inter-sectoral engagement such as:

- » Silicon Valley, California
- » Research Triangle Institute, North Carolina
- » Marg Science Technology Park, Chennai, India
- » Singapore Science Park

Is the GCR able to use its HEIs in this way?



HEI Orientation

Traditionally research oriented, offering professional degrees	Traditional universities	
Vocational and career-oriented	Universities of technology	
A mix of both	Comprehensive universities	

University of South Africa Academic staff 3 415 263 559 # of students enrolled
University of Pretoria Academic staff 5 113 55 734 # of students enrolled
Tshwane University of Technology Academic staff 1 860 52 688 # of students enrolled
North West University Academic staff 2 696 50 589 # of students enrolled
University of Johannesburg Academic staff 3 342 49 315 # of students enrolled
University of the Witwatersrand Academic staff 4 220 29 234 # of students enrolled
Vaal University of Technology Academic staff 737 19 407 # of students enrolled