



1 2013 Quality of Life Survey launched

On the 14th of August 2014, GCRO launched the Quality of Life Survey 2013 - the largest ever social attitudes survey conducted in the province.

2 Mobility in the Gauteng City-Region

A major new GCRO research report, *Mobility in the Gauteng City-Region*, was formally released at the launch of the 2013 Quality of Life Survey results. The report is a collection of papers written as part of a multi-year GCRO project on transport in the GCR.

3 The GCRO Barometer 2014

The GCRO Barometer is an online visualisation tool that can be used to see developmental progress in the GCR at a single glance, and was recently finalised and launched along with the 2013 Quality of life Survey results.

4 GCRO gets a second Research Director

In August 2014, GCRO welcomed Dr Claudious Chikozho as the GCRO's second research director.

5 GCRO at conferences around the world

GCRO was represented at a range of conferences around the world including

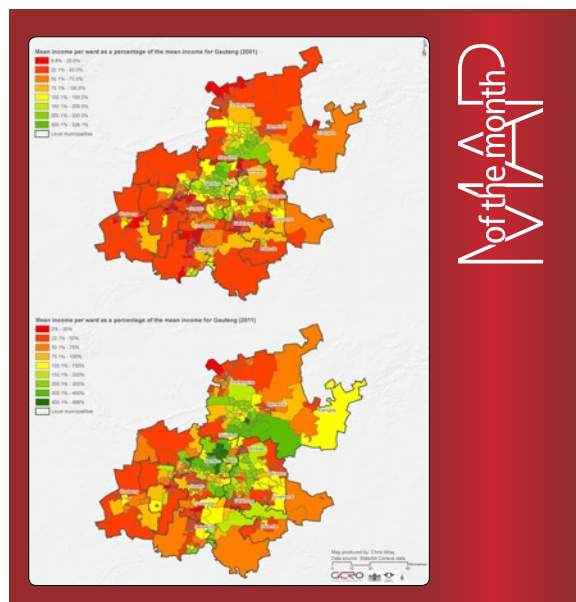
- ▶ *Twenty years of South African Democracy* conference in the United Kingdom,
- ▶ *World Urban Forum* in Colombia,
- ▶ *Global Forum on Urban Resilience and Adaptation* in Germany,
- ▶ *Geoinformatics Forum Symposium* in Austria.

News bytes

- ▶ Reports and publications
- ▶ Conferences, workshops and presentations
- ▶ Teaching and supervision and wider academic citizenship



Profiler



Of the month



Irene Lambrianos



DATA

1 | 2013 Quality of Life Survey launched

On the 14th of August 2014, GCRO launched the Quality of Life Survey 2013 - the largest ever social attitudes survey conducted in the province.

The GCRO launched our third 'Quality of Life' survey to a packed audience at Sturrock Park, where Premier Hon David Makhura and Johannesburg Mayor – but speaking as SALGA Chairperson – Cllr Parks Tau were respondents. The audience was made up of academics, public officials, civil society activists and others, and all were given an overview of this massive survey, with results in the first presentation looking at the provincial level and contrasting with wards, while the second presentation focused on comparisons between all the sub-provincial units of government in Gauteng. The latter prefigures the release, later this year, of the GCRO's first 'City Benchmarking Report', which uses the depth of the Quality of Life data to compare and contrast the municipalities and metros with one another.

From our first year of existence, GCRO has conducted a biennial 'Quality of Life' (QoL) survey. These have grown in both size and complexity on the one hand, and public and policy impact on the other.

The point of the surveys is to build up time-series data on the GCR which will allow us to undertake trend analysis, modelling and more complex multivariate analysis. The data we generate are made freely available, after a 6-month period, to anyone who wants to use the data for non-profit making purposes.

For the third survey, the GCRO was approached by the three metropolitan municipalities in order to increase the sample size and try to reach ward representivity. A highly competitive tender saw GeoSpace win the right to undertake 27 000 interviews covering all 508 wards in Gauteng. Geospace proposed the use of Statistics South Africa Census 2011 Small Area Layer data to distribute interviews within wards. This novel sampling approach saw us reach almost every ward and

the diversity of areas within wards. In just one ward was only a handful of interviews completed since the mining house that occupies much of the ward refused to allow fieldworkers to interview miners, even after the intervention of the Gauteng Planning Commission. In all other cases we achieved roughly 30 interviews or more per ward in non-metropolitan parts of Gauteng, and 60 or more in metro-wards. Sampling assistance was provided by Emeritus Professor Paul Fatti from the Wits School of Statistics & Actuarial Science.

We believe this to be the largest sample survey of social attitudes in Gauteng. The questionnaire covers many areas: about 60% of questions do not change over time, and provide our time-series and core indexes, including quality of life, marginalization, decent work and health status. In the last two QoL surveys, we have included an index on attitudes to violence against women, as well as detailed transport questions. New in the 2013 survey is an index of attitudes to the LGBTI community, and a detailed section on the informal sector.

The large sample also allows us to do city to city benchmarking. Preliminary results from this exercise were launched at the same time as the full QoL results and a full report is currently being prepared. On the basis of this report municipalities will be able to see how they are performing, relative to each other and the provincial average, on a host of key indicators. Ward-level profiles and a web-viewer are currently in the planning stages at GCRO.

Details on the QoL survey can be found on the website <http://www.gcro.ac.za/project/quality-life-survey-3>



GCRO Executive Director, David Everatt; Gauteng premier, Hon David Makhura, GCRO Chairperson, Rob Moore; and Chairperson of SALGA Gauteng, Cllr Parks Tau at the launch of the 2013 Quality of Life survey

SPACE & MOBILITY

2

Mobility in the Gauteng City-Region



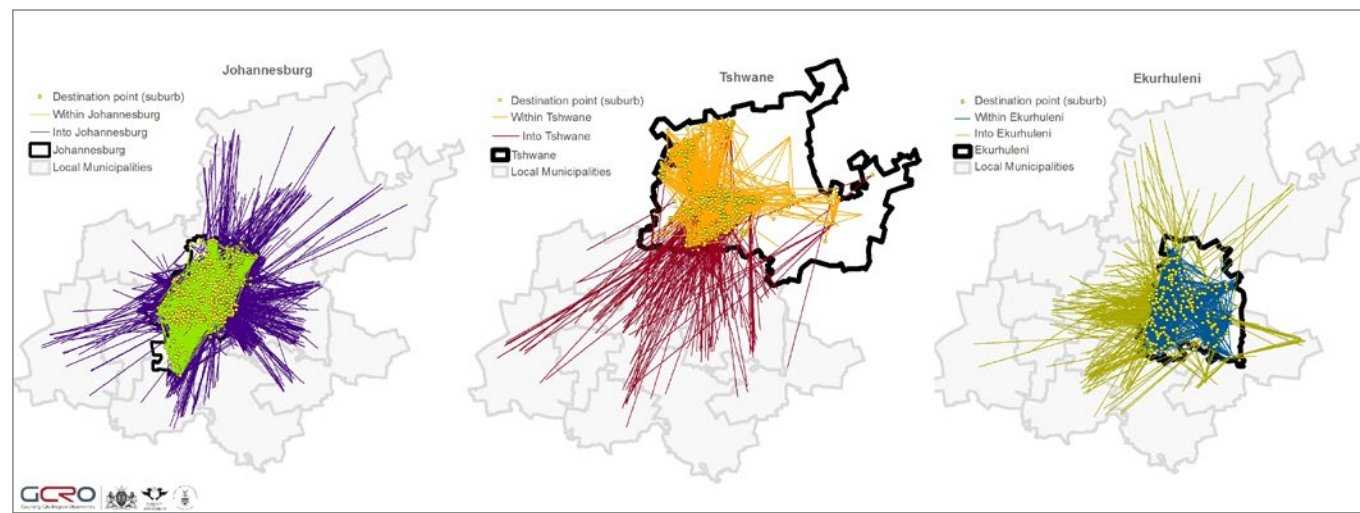
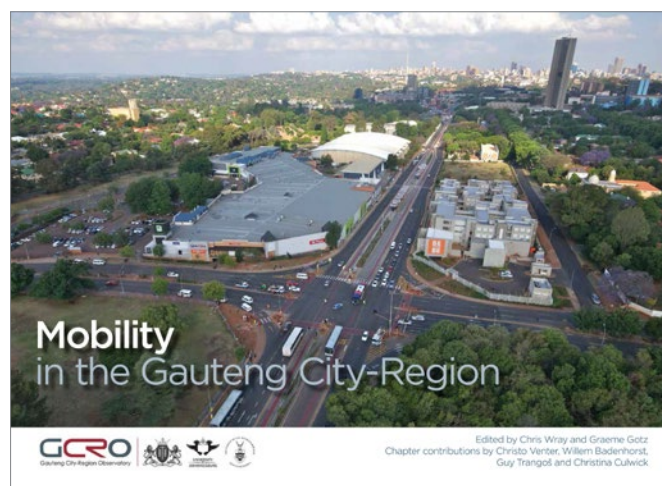
A major new GCRO research report, *Mobility in the Gauteng City-Region*, was formally released at the launch of the 2013 Quality of Life Survey results. The report is a collection of papers written as part of a multi-year GCRO project on transport in the GCR.

A major new GCRO research report, *Mobility in the Gauteng City-Region*, was formally released at the launch of the 2013 Quality of Life Survey results on 14 August 2014.

The multi-author 180 page report has been written in a remarkable moment in the history of transport development in Gauteng. On the one hand the region appears to be in a new 'golden era' of transit infrastructure design and investment, as well as long-term planning for ever-growing commuter transport needs. On the other hand, the transport difficulties faced by the Gauteng City-Region's (GCR) fast-growing population, as well as the many financial, spatial, social, economic and environmental challenges that flow from this, appear to be growing ever more acute. It is, therefore, important to delineate the existing flows of traffic across the GCR; to understand the challenges of transport efficiency, access and affordability; and to gauge the impact of key transport interventions like the Gautrain Rapid Rail Link, the Gauteng Freeway Improvement Programme and associated e-tolling, and municipal Bus Rapid Transit (BRT) infrastructure.

The report collects a number of papers written as part of a multi-year GCRO project on mobility in the GCR. The aim of the project was to: i) better understand the historical and current transport trends, based primarily on an analysis the GCRO's own datasets, in particular the transport questions in the biennial Quality of Life (QoL) Survey; and ii) gauge the impact of key transport infrastructure interventions and the effects of a lack of infrastructure in some areas. These aims, together with a summary of recent transport infrastructure projects and key transport challenges, are described in **Chapter 1**, written by Graeme Gotz and Chris Wray.

In 2012 Professor Christo Venter from the University of Pretoria was commissioned to develop a report for Gauteng Roads and Transport (GDRT), analysing data from the transport sections of the 2011 QoL Survey. This analysis is presented in **Chapter 2**, which examines transport patterns (including mode use, trip purposes, travel distances and speeds); satisfaction and perceived problems with transport; and the spatial variation of these patterns across the province. Various data are compared to identify underlying spatial factors affecting travel patterns. The chapter concludes by reflecting on the implications of the findings for transport planning and spatial development policy in Gauteng. Venter further extends this initial research in **Chapter 3**, in developing a 'Quality of Transport' (QoT) Index. The index provides a single measure reflecting residents' everyday lived experiences of the quality of

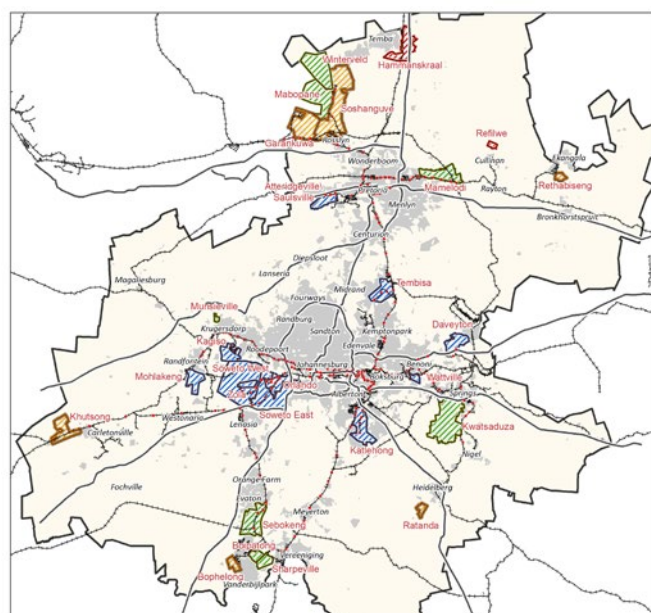
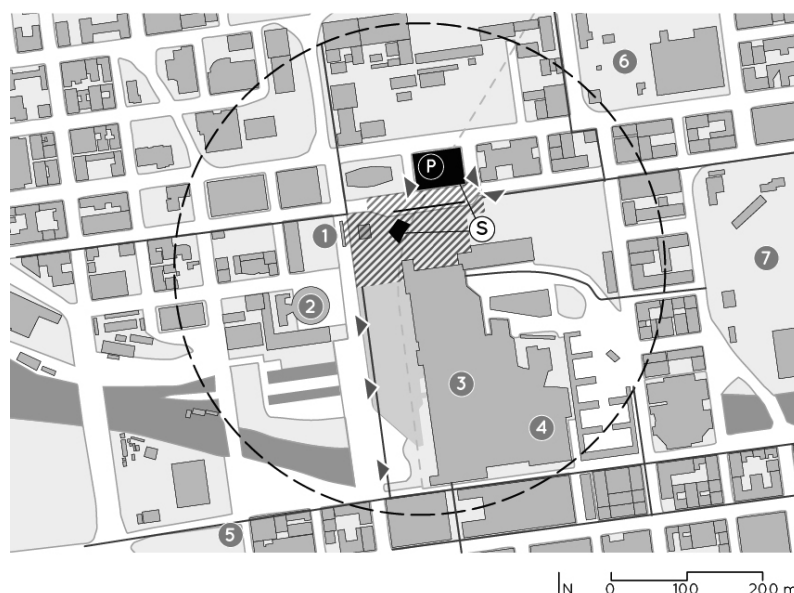


their transport in 20 'priority townships' identified by the GPG. The construction of the index is driven by the understanding that transport access and connectivity issues are key to the quality of life enjoyed by residents. Transport realities vary considerably across the city-region and the QoT Index gives a useful single measure of this variation.

In **Chapter 4**, GCRO researcher Guy Trangoš provides an analysis of four Gautrain stations, interrogating the quality of the public realm created by the stations' designs and their integration into the immediate surrounding precincts. The analysis is underpinned by a brief review of the historical context of transport planning and the development of spatial policies by local government in response to the implementation of the Gautrain infrastructure. Recommendations for similar projects in the future are offered in the closing section – valuable research to be considered by authorities should the proposed extensions to the Gautrain go ahead.

An often ignored but, from a sustainability perspective, an increasingly important aspect of transport is non-motorised transport (NMT). This report concludes with two NMT chapters by GCRO researcher Christina Culwick. **Chapter 5** explores the state of NMT in the GCR. It reviews the current policy environment supporting NMT; provides a demographic profile of typical NMT 'users', focusing on the poor who use NMT out of necessity rather than choice; and assesses current NMT infrastructure projects. In its conclusion the chapter highlights the transitions needed to facilitate greater uptake and a modal shift towards NMT as a legitimate component of an integrated transport system. The challenges and potential opportunities for the future of NMT in the city-region are visually portrayed in the form of a photo essay in **Chapter 6**, the final chapter of this report.

The report is available for download via the GCRO website: <http://www.gcro.ac.za/category/report-category/reports>.



Gauteng
Quality of Transport
Overall Quality
of Transport Index

Road network:
— Freeway and primary
--- Rail network
• Metrorail stations
• Residential areas
• Gauteng boundary
Clusters:
1: Inaccessible townships
2: Poor access, poor mobility townships
3: Medium access, mobility advantaged
4: High access, mobility advantaged

0 5 10 20 30 Kilometers



Christina Culwick

The GCRO Barometer is an online visualisation tool that can be used to see developmental progress in the GCR at a single glance, and was recently finalised and launched along with the 2013 Quality of life Survey results.

Over the last two years, GCRO has been developing a visualisation tool that can be used to see developmental progress in the GCR at a single glance. The online tool, the “GCRO Barometer”, was recently finalised and can be viewed on the GCRO website: <http://www.gcro.ac.za/barometer>.

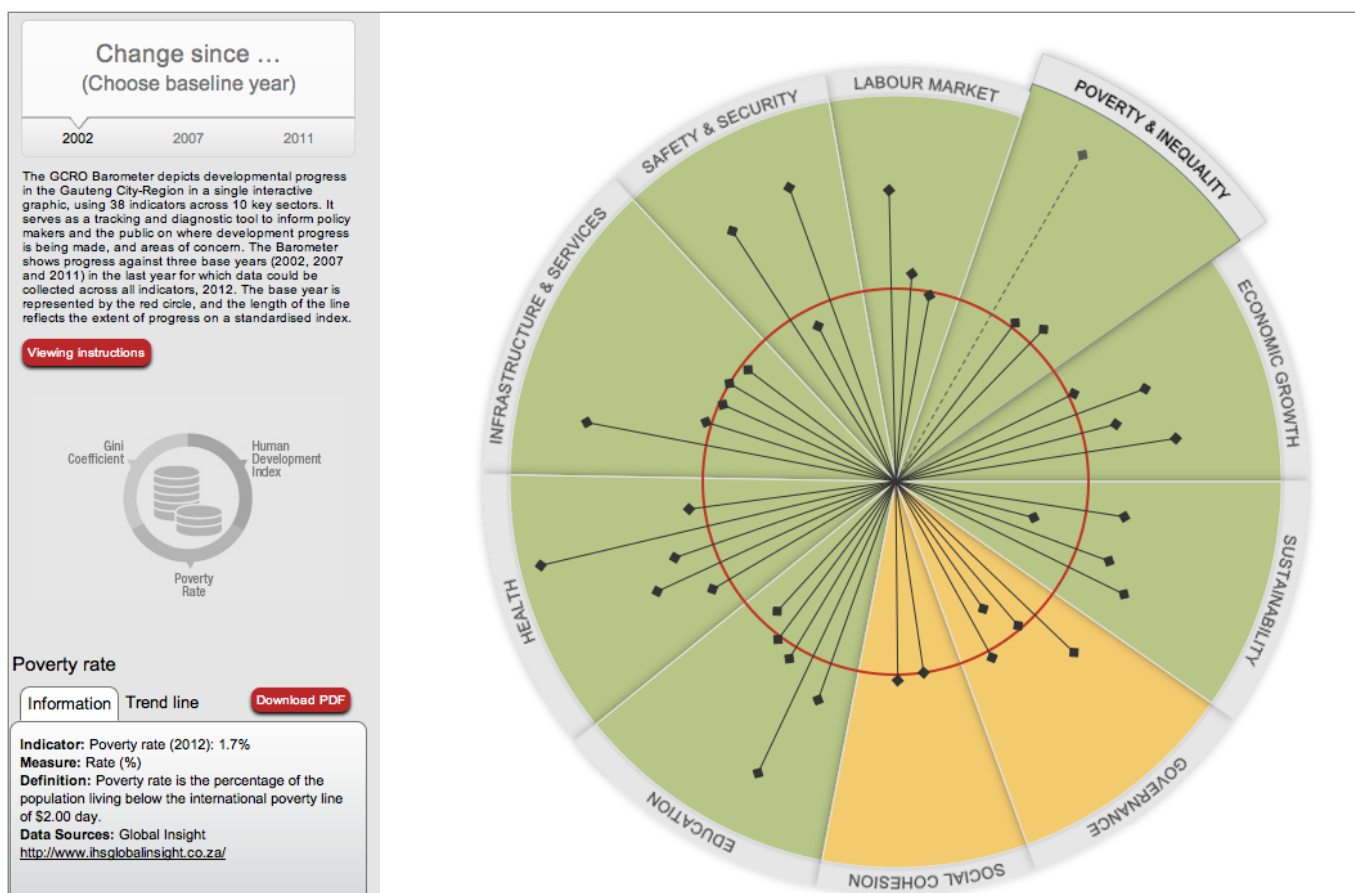
The Barometer is in line with the GCRO mandate of helping to build a knowledge base about the city-region for government, business, labour, civil society and citizens. The Barometer depicts developmental progress in the GCR in a single interactive graphic, using 38 indicators stretched across 10 key sectors. It serves as a tracking and diagnostic tool, and also as an information portal for policy makers and the public wanting to see where progress is being made and where concerns remain. Most importantly, the Barometer serves as a tool for benchmarking the GCR against other provinces in South Africa and comparable city-regions across the world.

The Barometer operates as a circular web-based interactive visualisation. It consists of 10 pie slices, each

representing a sector, and 38 indicator lines, each representing a specific indicator. All indicator values were standardised using a simple index, allowing all to be plotted on the same chart. Viewers are able to navigate the Barometer by choosing and viewing sectors and individual indicators, and switching between three different base years for comparison.

The base year is represented by a red circle within the pie. This holds an index base value of 100. Where an indicator line extends beyond the red circle there has been positive progress, and if it is within the circle there has been regression since the base year. Progress in each sector is also shown using a colour scale, with green indicating significant positive change, amber only minor positive change, and red any negative change. A sidebar presents detailed information about each indicator, including definitions, units of measurement and data sources, a trend chart for each indicator for the period 2002 to 2012, and a downloadable PDF document with a more complete analysis of each of the 38 indicators.

The Barometer will be updated as and when new data becomes available for all the indicators.



4 | GCRO gets a second Research Director

In August 2014, GCRO welcomed Dr Claudious Chikozho as the GCRO's second research director.

Over the past five years, GCRO has grown steadily to our current size of some 14 staff. Our work has grown in scale and complexity. Over the last couple of years, we have been extremely fortunate in being able to secure the services of a gifted and ambitious set of researchers, who are taking on bigger, more complex and more policy-relevant projects.

As a result however, we needed more senior capacity, and GCRO is proud to announce the arrival – as of 1 August 2014 – of our second Research Director, Dr Claudious Chikozho. Claudious has joined us from the Exxaro Chair in Business and Biodiversity Leadership at the Centre for Responsible Leadership, University of Pretoria, where he was an Associate Professor.

Claudious is an experienced Social Scientist with a strong background in programme development and implementation and applied research. He has over 16 years of experience in the research, development and education sectors in Africa with special focus on integrated water resources management, development planning, smallholder

agriculture and livelihoods in rural area contexts. He has acquired knowledge, experience and keen interest in public policy analysis for agricultural water management and related resource sectors; adaptation to climate change; local capacity building; knowledge management; and programme monitoring and evaluation.

Claudious holds a Masters in Public Administration and a Doctorate in Integrated Water Management, and so will easily slot into many of the GCRO's projects in related areas – GCRO is already working on a metabolic flow analysis of the city-region, Acid Mine Drainage, and a host of other sustainability-related projects. Moreover, he has a diploma in M&E, which will be of assistance in tightening our internal M&E processes, as we seek to turn around ever-more complex projects with ever-tighter deadlines! We are pleased to welcome Claudious to the GCRO team.



5 | GCRO at conferences around the world

GCRO was represented at a range of conferences around the world

1994-2014: TWENTY YEARS OF SOUTH AFRICAN DEMOCRACY, *St Antony's College, Oxford*

Prof David Everatt, the Executive Director of the GCRO, presented three papers at the recent conference on 20 years of democracy at St Antony's College, Oxford. Organised by a dynamic doctoral student, Jason Robinson (not the former rugby player...), the conference was a mammoth affair, running over three days with multiple parallel sessions, and participants from the venerable (John Saul, Shula Marks, Colin Bundy) to a whole new generation of academics completing their doctorates at Oxford and elsewhere. A slew of Wits academics were also present, including Vice Chancellor Adam Habib and others.

Figure 2: Former Deputy President Kgalema Mothlanthe arrives at St Antony's, on a typically rainy spring day! (Photo: Deputy President's Office, via St Antony's College, Oxford)

GCRO featured on the first day, which was an 'invitation only' workshop chaired by Prof Nic Cheeseman on 20 years of the Gauteng Legislature, in the context of other legislatures on the continent (and in the country). Issues included parliamentary oversight, budgetary oversight, public participation and legislatures in contemporary parliamentary democracies. The key comparative session included a presentation on the status of the GCR by Prof Everatt and one on Cape Town by outgoing principal policy analyst in the Mayor's Office, William Atwell.



Former Deputy President Kgalema Mothlanthe arrives at St Antony's, on a typically rainy spring day! (Photo: Deputy President's Office, via St Antony's College, Oxford)

The conference proper began the next day, with one of the best attended sessions on history in post-apartheid South Africa. This session saw the involvement of William Beinart, Colin Bundy, Saul Dubow and John Saul, suggesting that the fascination of history – and the re-making of history post-apartheid, with many reminders of Churchill's observation that 'history is written by the victors' – remains deeply alluring.

As overall conference organiser Prof William Beinart put it, "The conference celebrates the transition in South Africa and 20 years of democracy. But we want to provide a forum for a critical exploration of both state and society in those years. How do we understand the changing nature of political power and democratic institutions? How should we analyse inequalities and how far do these remain rooted in South Africa's troubled history? How do we think about the routes of rapid social and cultural change that characterize South Africa society?"

A highlight of the conference was undoubtedly the keynote address by then Deputy President of the Republic of South Africa, Kgalema Motlanthe.

The conference then broke into multiple sessions, including:

- Culture
- South African Foreign Policy
- HIV/AIDS & Citizenship
- Public Opinion & Political Parties
- Law, Nation-Building and Transformation
- Constitutional Court

- Homelands & Traditional Authorities
- Youth
- ANC as Organisation
- Crime & Violence
- Minorities & Transition
- ANC in office
- Homelands & Traditional Authorities
- Non-Racialism
- Community Life & Popular Protest
- ANC and Consolidation of Democracy
- New Perspectives on the South Africa State
- Land & Land Reform
- South Africa's forthcoming 2014 election Parliament & Institutions
- Homelands & Traditional Authorities
- The ANC, Capital & Labour
- Public Policy
- South Africa's Democratic Transition

In each of these sessions there were between 3 and 5 papers, with participants from all over the world. Prof Everatt presented on non-racialism, and in the session on public opinion and the 2014 election. As with most conferences, there was massive information overload, but as some papers are being revised into post-conference publications, it should distil into a fascinating set of widely divergent views on the 20 years of democracy.

THE WORLD URBAN FORUM 7, Medellín

Every two years UN Habitat hosts the World Urban Forum. This year Colombia's innovative second city, Medellín, had the privilege of welcoming over 22,000 global delegates, including two of GCRO's very own. Brought together under the theme of 'Urban Equity in Development – Cities for Life' the conference grappled with a number of urban concerns including, wealth and gender inequality, resilience, urban design and planning, and youth.

As part of the GCRO's ambitions to improve international links, and expand city-region dialogue with an international audience, senior researcher Caryn Abrahams and researcher Guy Trangoš grabbed the opportunity to attend the renowned event, in a city lauded for its creative solutions to urban equity challenges.

The conference was a great success, with a stimulating programme and extensive exhibition component. The event heaved with debate and discussion. Although there were one or two overly philosophical discussions, sessions were generally focused on tackling real challenges in an honest and practical manner. Networking sessions brought together urban planners, strategists and governance experts from local and national governments across the globe, to debate and discuss everything from tools for rating sustainable housing, inequality of access to neighbourhood regeneration.



Guy and Caryn at the World Urban Forum in Medellín

Key highlights of the main programme included a talk by Nobel Laureate Joseph Stiglitz, a dialogue on equity in urban development law, and a series of challenging urban documentaries. Guy participated in an interactive Architecture Sans Frontières UK networking session on Participatory design and planning for equitable cities. Caryn attended a session, hosted by the German Federal Ministry of Economic Cooperation and Development, where city mayors from different continents discussed the obstacles they face in promoting innovation and thereby transforming their communities.

The greatest lessons, however, were to be found in the built successes of the host city, particularly in delivering services to hillside communities. These included the Metro Cable, a cable car that connects informal hillside communities to the previously inaccessible opportunities and amenities of the city. Low-cost housing covers the valley hillsides and local taxis (not unlike some garishly colourful and loud minibuses in Johannesburg), provide affordable transport, navigating

across the city, steeply up or down the narrow winding valley roads. A network of libraries built in hillside communities also presented a ground-breaking approach to improving access to education and social services in under-served areas. The city's Botero Square, named after Medellín's iconic artist and sculptor Fernando Botero, is a fascinating public space criss-crossed by people working or living in the city and surrounding suburbs. Caryn counted up to forty traders in the course of only twenty minutes, as they traversed the space selling their wares or foodstuff to locals relaxing or reading in the square, to others passing through, and to tourists haggling over Botero miniatures.

It is envisaged that the GCRO will participate in the next World Urban Forum in 2016 by hosting exhibition space showcasing our work, and arranging a series of discussions on the Gauteng City-Region and its significance to multi-level urban governance in key regions across the globe. The next World Urban Forum will most likely be themed around the post-2015 agenda of UN Habitat – sustainable human settlements.



World Urban Forum, Medellín (Left) and the Metro Cable built into the steep hillside (Right)

RESILIENT CITIES CONFERENCE 2014 – 5TH GLOBAL FORUM ON URBAN RESILIENCE AND ADAPTATION, Bonn

Researcher Kerry Bobbins attended the *5th Global Forum on Urban Resilience and Adaptation*, in Bonn, Germany, at the end of May. Attendance at the conference was funded by the DST supported Urban Resilience project in which GCRO is a partner with the Wits SARChI Chair in Planning and Modelling. The conference provided a platform for sharing knowledge and insights between cities in both developed and developing countries. The focus of the conference was to identify key opportunities and challenges for cities in building urban resilience and adapting to the effects of climate change.

The conference attracted delegates from diverse backgrounds, including: state and local government; academia and research institutes; international organisations; and the private sector. Discussions focused inter alia on adaptation and planning, resilient

built infrastructure, data, ecosystem-based adaptation, financing, and researcher-practitioner collaborations.

Some of the key conference findings were around the shared responsibilities for creating resilient cities and how adaptation plans should be leveraged across all political and administrative scales. It was highlighted that city alliances should be strengthened to encourage knowledge sharing and co-learning. Furthermore tools, monitoring and benchmarking studies were identified as critical for implementing robust programmes on the ground.

City-regions were identified as the ideal scale at which to integrate programmes that meet resilience goals, because the spatial and political scales – that traverse jurisdictional boundaries – can allow for more robust and resilient adaptation plans in the long term.

GEOINFORMATICS FORUM SYMPOSIUM, Salzburg, Austria

The GI_Forum Symposium is an annual conference, held in the beautiful city of Salzburg, Austria, which aims to provide a platform for dialogue among technologists, critical thinkers, GIS Scientists and educationalists in a continuing effort to support the creation of an informed GIS Society (www.gi-forum.org). This year's conference – held from 1-4 July with the theme Geospatial Innovation for Society – was attended by senior systems manager Chris Wray, who presented a poster on behalf of GCRO.

The main keynote address was presented by André Skupin from San Diego State University, discussing “A world beyond networks: geographic approaches to knowledge visualization”. Other hot topics included: linked open data; analysing travel patterns from georeferenced tweets; and the development of new methods of creating homogeneous spatial reporting units independent of artificial administrative boundaries, referred to as integrated geons.

GCRO's poster, authored by Chris Wray, Daniel Kibirige and Guy Trangoš, entitled “Creating policy debates through data visualisations and GIS mapping in the Gauteng City-Region, South Africa”, was presented at the conference's evening poster session, on 2nd July. The poster describes how, within the GCRO, GIS is utilised beyond a descriptive mapping or support role, by leading and defining a number of research projects as an analytic tool. This is illustrated in the poster through a series of maps of the month focusing on spatial change, with examples of the latest vignettes also provided.

Analysis of spatial change in the GCR is vital in understanding post-apartheid spatial integration and all the maps in the poster grapple with this theme. These dynamic data visualisations, which provide new key insights into spatial challenges affecting the GCR, have been well received by the public and continue to promote critical debates among academic and government colleagues. The poster is available for download from

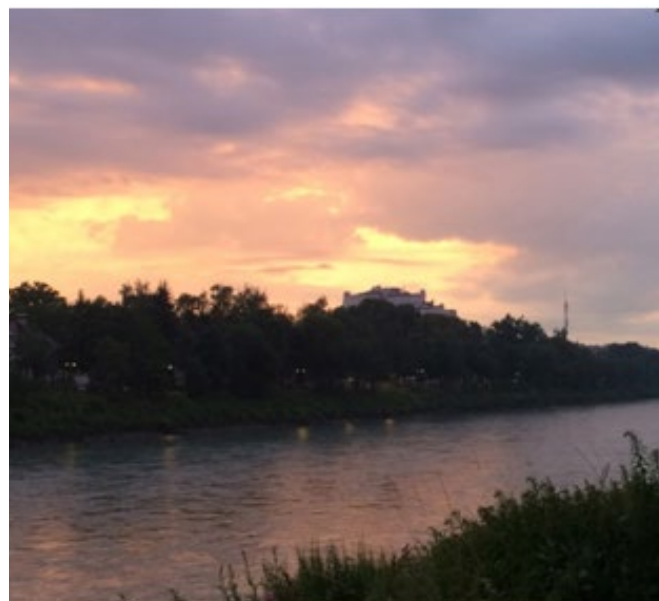
<http://www.gcro.ac.za/reports-data/gcro-reports/category/published-works>.



Salzburg's old town from the Hohensalzburg castle



View from the Salzburg conference venue



Salzburg sunset

CREATING POLICY DEBATES THROUGH DATA VISUALISATIONS & GIS MAPPING IN THE GAUTENG CITY-REGION, SOUTH AFRICA

The Gauteng City-Region Observatory is a partnership between the University of Johannesburg, the University of the Witwatersrand, Johannesburg, and the Gauteng Provincial Government.

By Chris Wray, Daniel Kibinge and Guy Truong

Contact: chris.wray@gcro.ac.za | Tel +27 11 717 7280 | www.gcro.ac.za
 Gauteng City-Region Observatory, Private Bag 3, Wit 2050, South Africa

GCRO
 Gauteng City-Region Observatory

UNIVERSITY OF JOHANNESBURG
UNIVERSITY OF THE WITWATERSRAND
UNIVERSITY OF PRETORIA



THE GAUTENG CITY-REGION

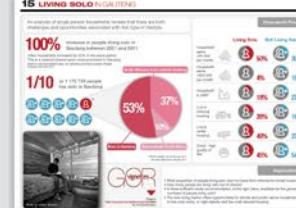
The Gauteng City-Region (GCR) is an integrated cluster of cities, towns and urban nodes that constitute the economic heartland of South Africa, with the Gauteng province alone contributing 36% of the national Gross Domestic Product (GDP). The Gauteng City-Region Observatory (GCRO) has, since its establishment in September 2008, recognised that GIS is an integral part of achieving the vision of a more functionally integrated, spatially coherent, globally competitive, economically productive, environmentally sustainable and socially inclusive GCR.

The analysis of spatial change in the GCR is vital in understanding post-apartheid spatial integration, and all the major metropolitan areas grapple with this theme. These dynamic data visualisations, which provide new key insights into spatial challenges affecting the GCR, have been well received by the public, and continue to promote critical debates among academic and government colleagues.

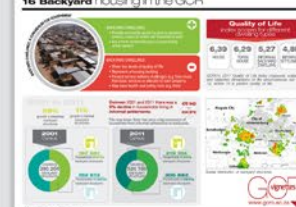
VIGNETTE SERIES

A vignette is defined as "A brief narrative description, account, or episode" and provides "slices-of-life" perspectives on the GCR. The examples shown here are the latest five vignettes produced by the GCRO, in chronological order.

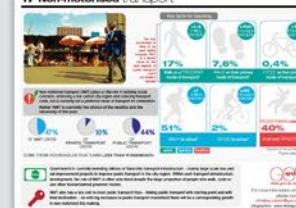
15 LIVING BOLD INNOVATIONS



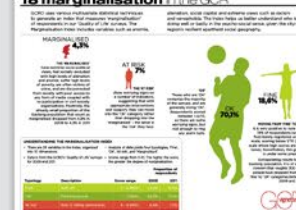
16 Backyard housing in the GCR



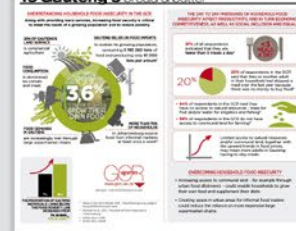
17 Non-motorised transport



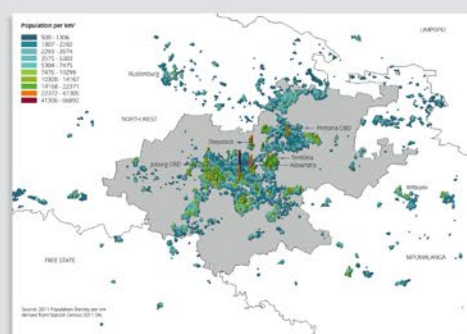
18 marginalisation in the GCR



19 Gauteng's bread & butter



Sprawling landscapes [Image below]
 An aerial view of Tembisa in the north-east of the Gauteng City-Region



N E w s

Reports and publications

- Gotz, G., Wray, C., Venter, C. Badenhorst, W., Trangoš, G. & Culwick, C. (2014) *Mobility in the Gauteng City-Region*, Wray, C. & Gotz, G. (eds), GCRO.
- Piketh SJ, Vogel C, Dunsmore S, Culwick C, Engelbrecht F and Akoon I (Forthcoming 2014), 'Climate Change and Urban development in southern Africa: the case of Ekurhuleni Municipality (EMM) in South Africa', *Water SA*.
- Trangoš, G (2014). Master's Projects: Architecture & urbanism, volume I (Book review). *Architecture South Africa: Journal of the South African Institute of Architects*, 0 (66), March/April: pp. 51 - 51.
- Trangoš, G., Adleson, I., Palominos, N., Valdez Young, A. & Alshalfan, S. (2014) Reordered publics: Re-imagining the City of London, *City: analysis of urban trends, culture, theory, policy, action*, 18:2, 191-213.
- Wray, C. (2014), 'Racial integration in the Gauteng City-Region (GCR), South Africa', *Regional Studies Regional Science*, Volume I, Issue I, 79-81.
- Sally Peberdy was invited to write a piece for the South African Pavilion at the 2014 Venice Biennale. This piece "Ours is a remarkable country..." – a Century of Movement, Displacement and Migration" will be placed on the South African Pavilion website which is currently under construction.

Conferences, workshops and presentations

- Caryn Abrahams and Guy Trangoš attended the *World Urban Forum 7* in Medellín, Colombia (5-11 April 2014)
- David Everatt attended the *1994-2014: Twenty years of South African Democracy Conference* in Oxford, England (24-26 April 2014). He gave three presentations at the conference including:
 - 'The state of the Gauteng City-region' to the legislatures session
 - 'Nonracialism in South Africa today'
 - 'Politics, polling and social change in South Africa: The fight for Gauteng in Election 2014'.
- Christina Culwick and Darlington Mushongera attended the *Wits Water Workshop* (18 July 2014)
- Graeme Gotz, Kerry Bobbins and Christina Culwick attended a workshop on *Resilient Densities in the City of Johannesburg* (7 July 2014)

- Chris Wray attended the *GI_Forum* conference in Salzburg, Austria from 1-4 July 2014 and presented a poster (authored by Chris Wray, Daniel Kibirige and Guy Trangoš) entitled 'Creating policy debates through data visualisations and GIS mapping in the Gauteng City-Region, South Africa'.
- Kerry Bobbins attended the *Resilient Cities* conference - 5th global forum on urban resilience and adaptation (29-31 May 2014).
- Kerry Bobbins attended the *Society of South African Geographers (SSAG) Conference* (26-27 June 2014). She presented a paper on 'Investigating the financial vulnerability of households to mine residue areas in the Gauteng City-Region, South Africa'.

Teaching & supervision & wider academic citizenship

- GCRO hosted a delegation from Georgia State University on 9 April 2014 and presented GCRO's current projects.
- Chris Wray and Christina Culwick presented lectures for *Global Change MSc Programme* at Wits, entitled 'Spatial transformation in Johannesburg in relation to the Gauteng City-Region' and 'The state of Green Infrastructure in the Gauteng City-Region' respectively (17 June 2014).
- Guy Trangoš is part of the panel for *Columbia University GSAPP 'Global Africa Lab workshop'*. He has been the external examiner for the 'Masters Architecture Research Methodology' course at UJ, and the Wits BAS (Hons) course 'Research Project'.
- Kerry Bobbins sat on review panel for master student proposal at the *School of Architecture and Planning*. She also acted as an advisor on a student project at *University of the Witwatersrand's School of Geography* on the 'Mapping active and abandoned mines in the Witwatersrand basin: issues of data availability, data quantity and data quality'.
- Sally Peberdy acted as the external examiner for an *MScSocSci* thesis from the *University of Pretoria* and a *PhD* thesis from *UNISA*.
- Koech Cheruiyot lectures 'Quantitative Methods for Property Studies', a year-long course in the *MSc (Building) Property Development and Management, School of Construction Economics & Management*, at Wits.
- Caryn Abrahams teaches a module on a *Masters* course in *Development Studies* at the *Nelson Mandela Metropolitan University*, where she focuses on the discourse(s) of development.