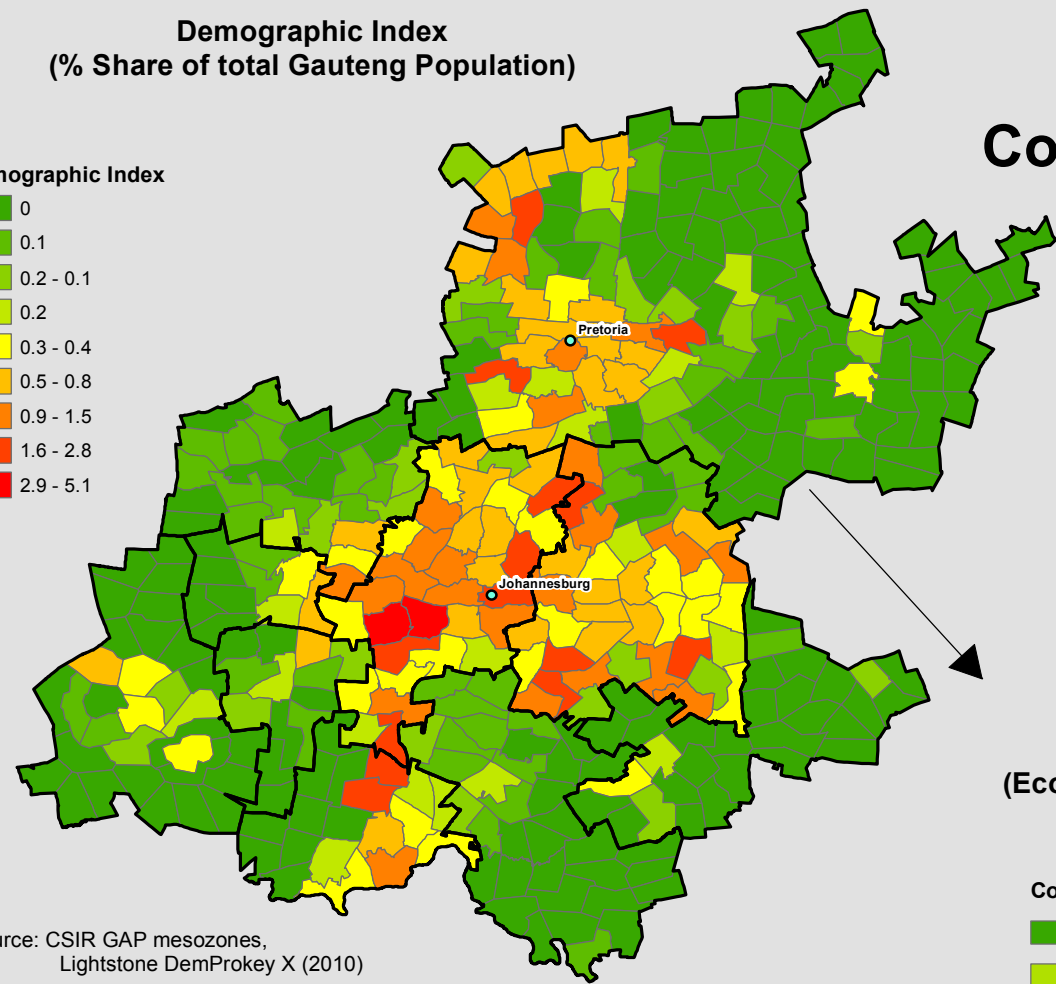
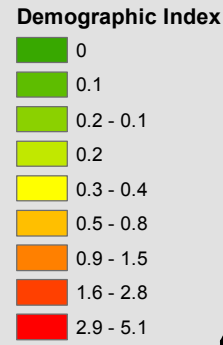


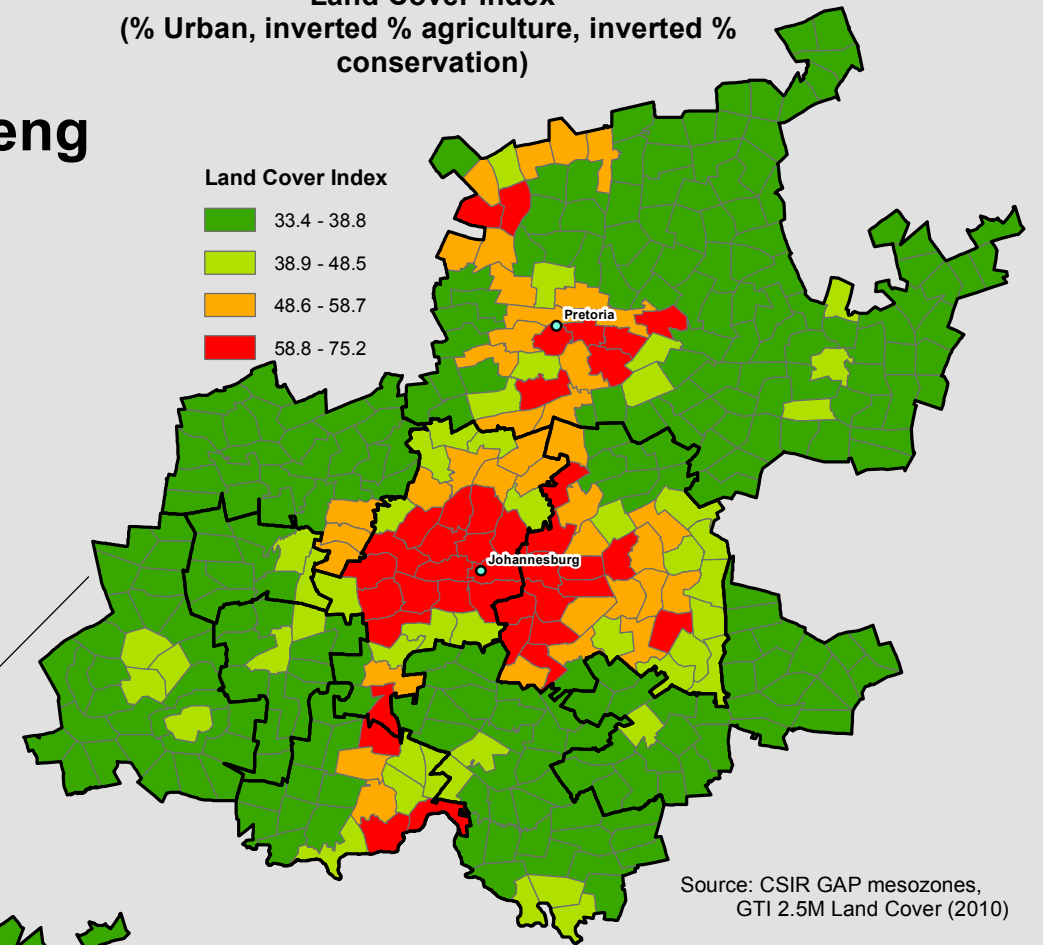
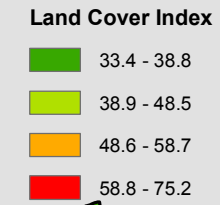
# Defining the Core and Periphery for Gauteng using CSIR Mesozones

**Demographic Index**  
(% Share of total Gauteng Population)



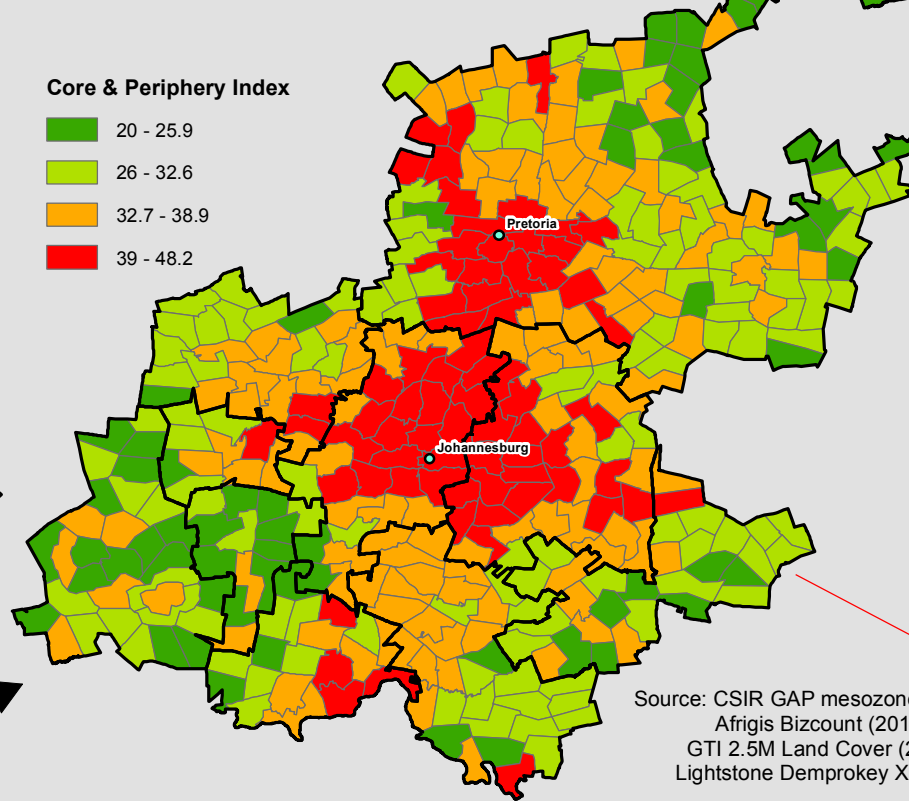
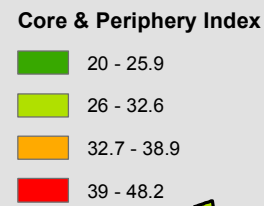
Source: CSIR GAP mesozones, Lightstone DemProkey X (2010)

**Land Cover Index**  
(% Urban, inverted % agriculture, inverted % conservation)



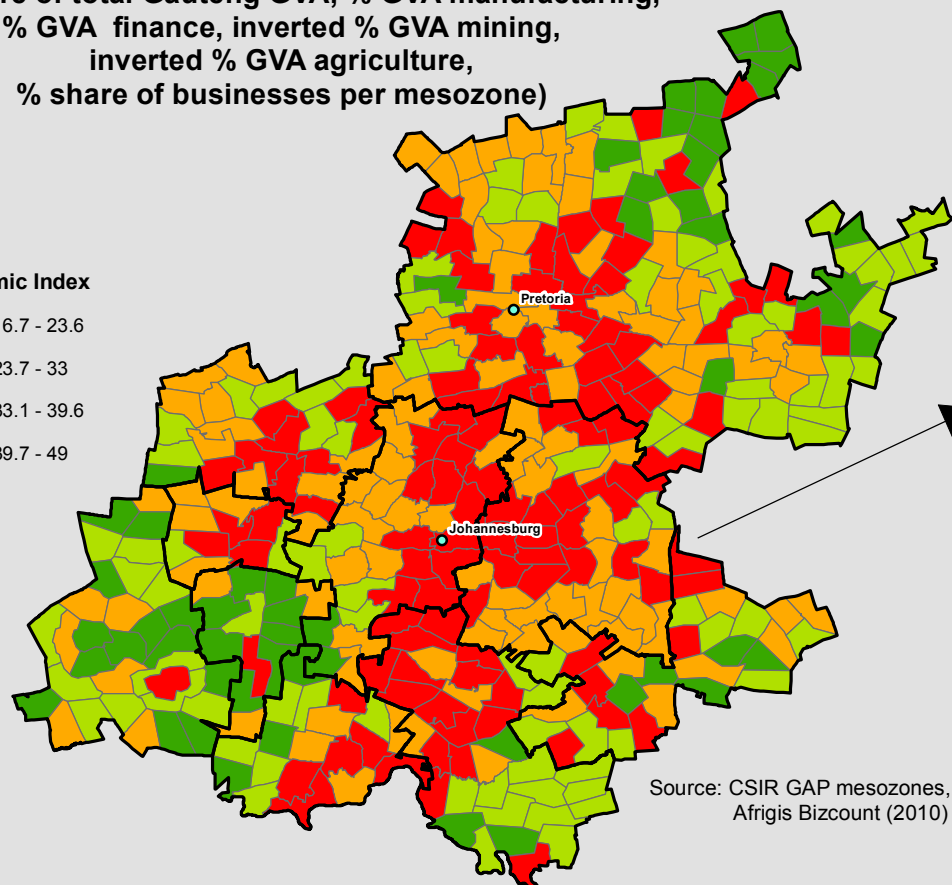
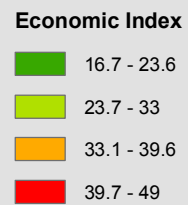
Source: CSIR GAP mesozones, GTI 2.5M Land Cover (2010)

**Core & Periphery Index**  
(Economic, demographic & land cover indexes)



Source: CSIR GAP mesozones, Afrigis Bizcount (2010), GTI 2.5M Land Cover (2010), Lightstone Demprokey X (2010)

**Economic Index**  
(% Share of total Gauteng GVA, % GVA manufacturing, % GVA finance, inverted % GVA mining, inverted % GVA agriculture, % share of businesses per mesozone)



Source: CSIR GAP mesozones, Afrigis Bizcount (2010)

**Core and Periphery Index**

