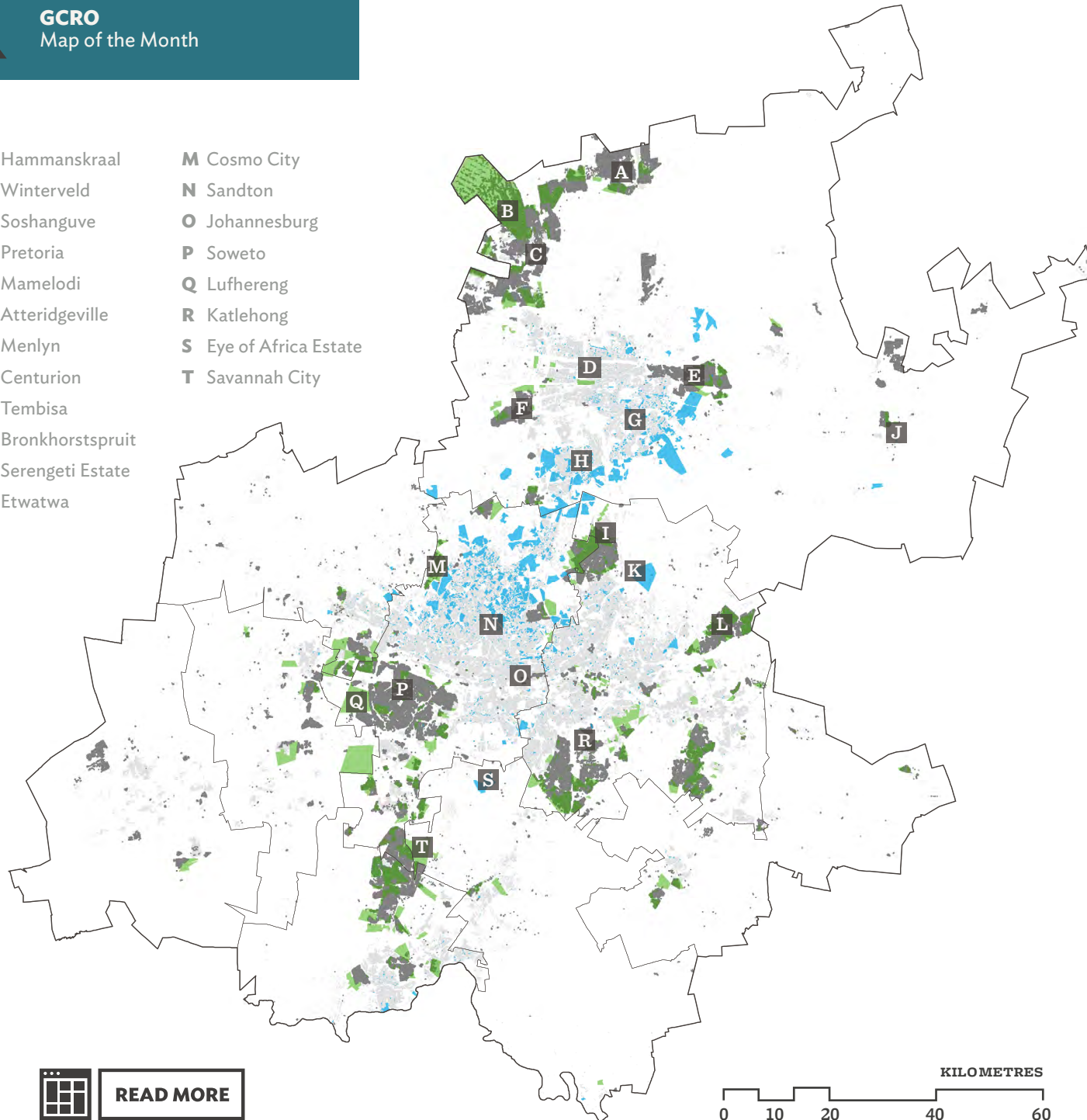




- A Hammanskraal
- B Winterveld
- C Soshanguve
- D Pretoria
- E Mamelodi
- F Atteridgeville
- G Menlyn
- H Centurion
- I Tembisa
- J Bronkhorstspuit
- K Serengeti Estate
- L Etwatwa
- M Cosmo City
- N Sandton
- O Johannesburg
- P Soweto
- Q Lufhereng
- R Katlehong
- S Eye of Africa Estate
- T Savannah City



[READ MORE](#)



Three residential types in Gauteng

Legend

- Informal dwelling
- Government housing programme
- Gated estates and boomed-off areas
- Urban footprint
- Gauteng boundary
- Local municipality

Authors

Christian Hamann, Richard Ballard and Yashena Naidoo

Map

Christian Hamann and Yashena Naidoo

Data Source

AfriGIS Gated communities (2012), Gauteng Department of Human Settlements (2014), GTI building based landuse (2016/17), ESA Land cover (2016)