

Gauteng Quality of transport

Overall quality of transport index

- Residential areas
- Commercial
- Industrial
- Smallholdings
- Protected Areas/Natural Systems
- Gauteng boundary
- Waterbodies

- Existing Road Network
- Freeway and Primary
 - Secondary
 - Tertiary
 - Rail network

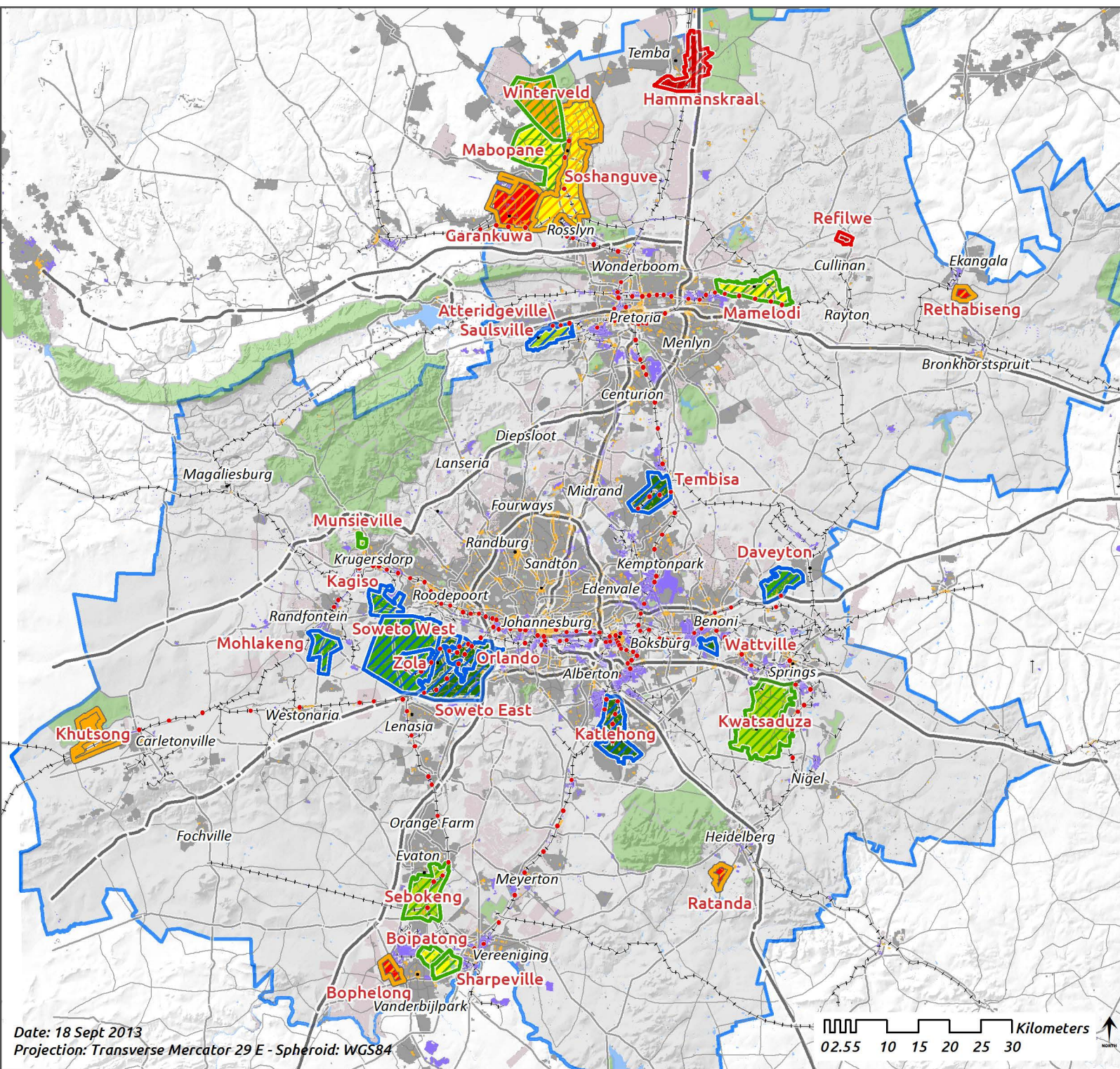
- Metrorail stations

Overall quality of transport index

- 2.662 - -2.022
- 2.021 - -1.118
- 1.117 - -0.622
- 0.621 - -0.353
- 0.352 - -0.062
- 0.061 - 0.336
- 0.337 - 0.770

Clusters

- 1: Inaccessible townships
- 2: Poor access, poor mobility townships
- 3: Medium access, mobility advantaged
- 4: High access, mobility advantaged



Date: 18 Sept 2013
 Projection: Transverse Mercator 29 E - Spheroid: WGS84

